

# CableSafe® - Simplicity in Safety



# Slips, trips & falls

- cause 25% of all workplace liability accidents\*
- 95% of major slips & trips cause broken bones\*
- causes dropped objects
- causes falls from heights



\* Source: [www.hse.gov.uk](http://www.hse.gov.uk) – HSENI Annual Report

# CableSafe Safetyhooks

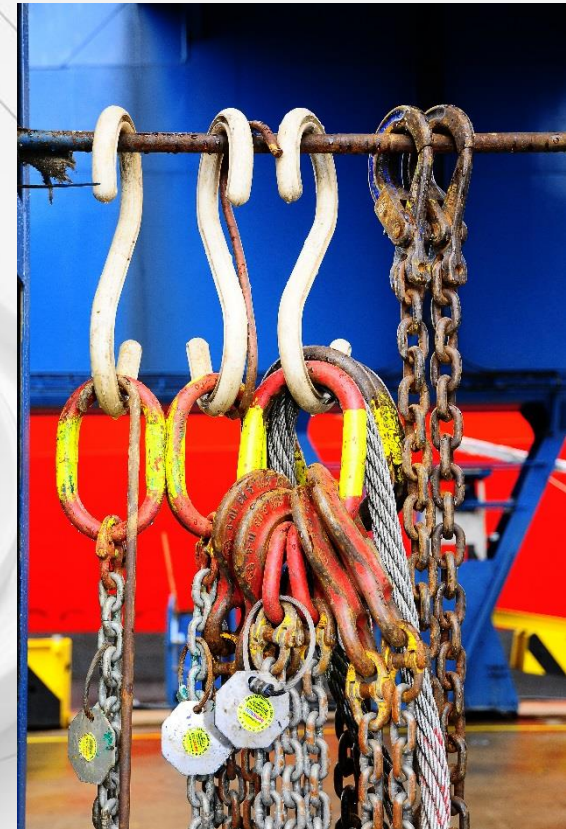
1. Easy suspend cables, wires & hoses
2. Simple effective S-shape
3. Contributes to a safe work culture
4. Efficient cable management
  - replacing temporary cables
  - cable life extension by reduced wear
  - prevents environmental spills





# Industrial Housekeeping

1. Policy for most multinationals
2. Cable management is an absolute requirement
3. Cable(Safe) management: *“Avoid slips & trips by suspension of cables, hoses and temporary equipment using S-hooks.” \**



\* Source: Total and DSM safety procedures

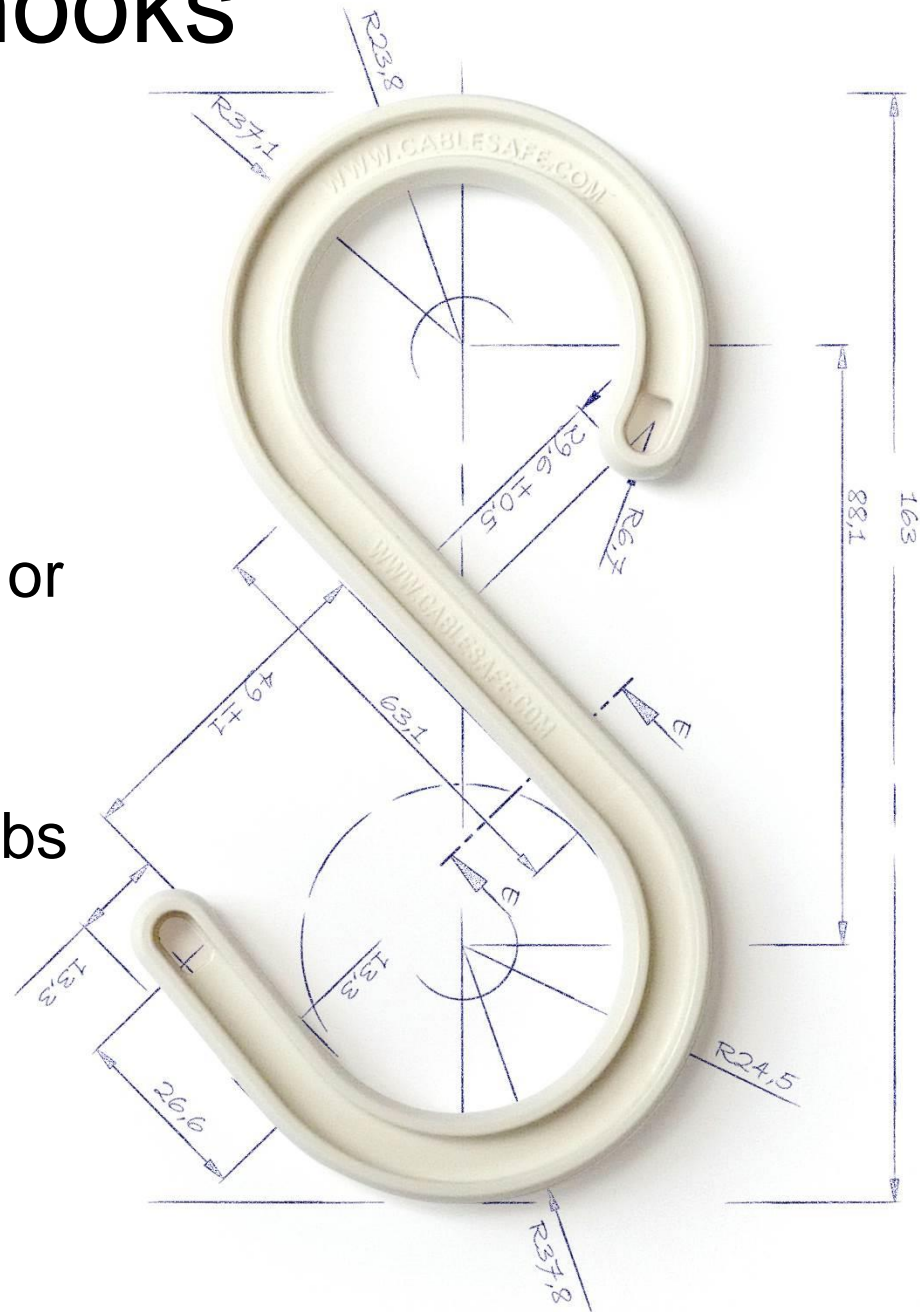
# CableSafe Safetyhooks

- ✓ Application during maintenance, turnaround, construction and industrial works
- ✓ Industries: refineries, chemical plants, shipbuilding, electrical power stations, festivals, wind/solar energy, mining and nuclear installations



# CableSafe Safetyhooks

- ✓ Non-conductive of electricity
- ✓ High UV resistance
- ✓ Heat resistant: -20 to 200°C, or -4 to -392°F
- ✓ Load: 40-300 kg, or 88–600 lbs
- ✓ Material: glass reinforced polyester





# Cable(Safe) management [1/3]





# Cable(Safe) management [2/3]





# Cable(Safe) management [3/3]



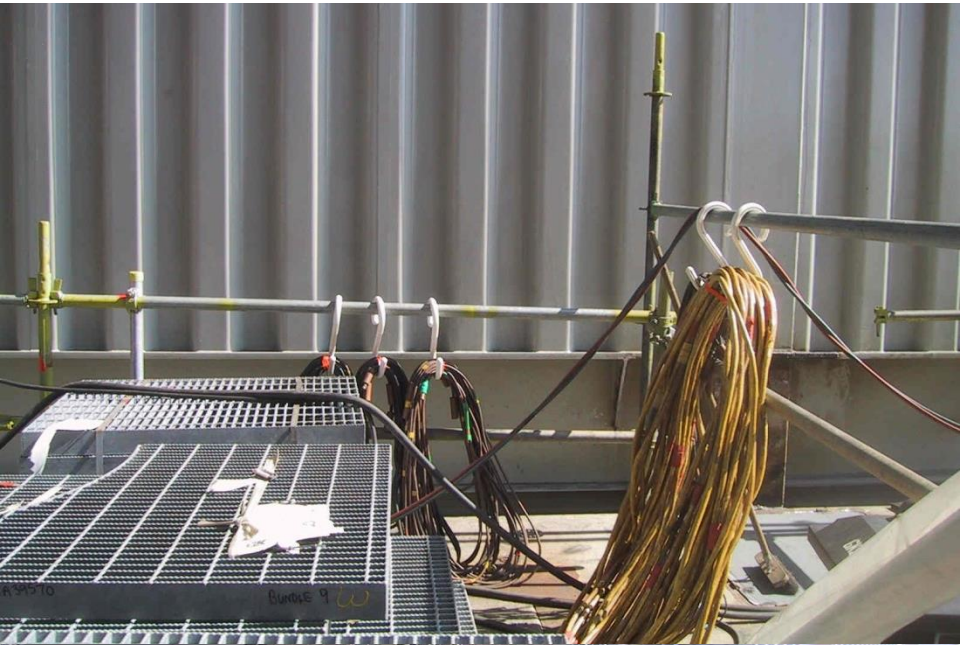


# Suspension applications [1/2]



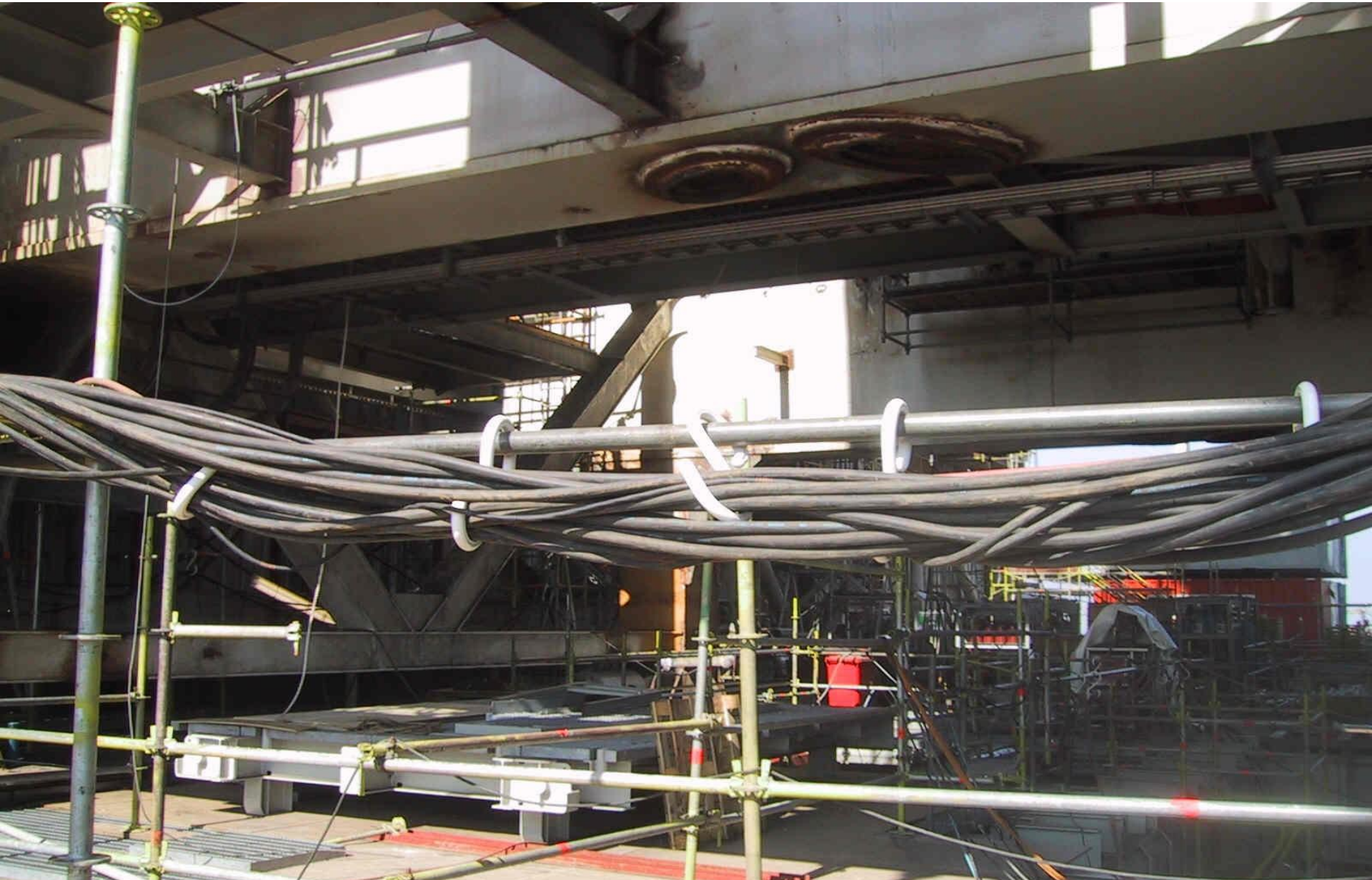


# Suspension applications [2/2]





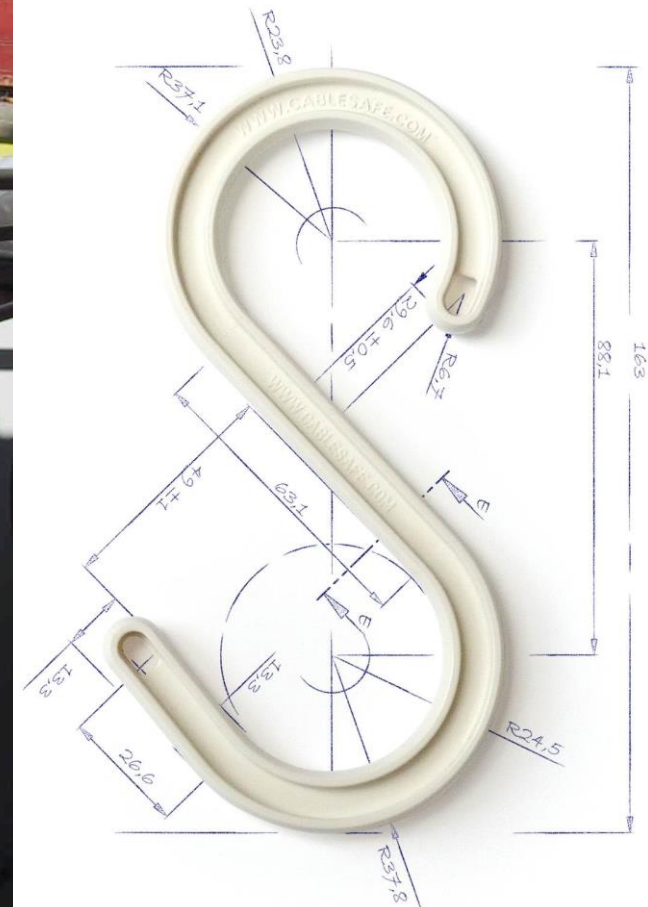
# Heavy load capability







Eliminate: slips, trips  
& blunt impacts!



# CableSafe<sup>®</sup> specifications

Model	6"	9"	12"	15"
<b>Cable opening size</b>	47 mm	70 mm	95 mm	120 mm
<b>Maximum load</b>	40 kg (88 lbs)	55 kg (121 lbs)	190 kg (418 lbs)	300 kg (661 lbs)
<b>Weight</b>	55 grams (0.12 lbs)	105 grams (0.23 lbs)	350 grams (0.77 lbs)	650 grams (1.43 lbs)
<b>Working temperature</b>	from -20°C (-4°F) up to 200°C (392°F)			
<b>Material</b>	Glass reinforced polyester			
<b>Standard available colors</b>	White   Yellow   * company specific colors and company name on request			



# Cablesafe<sup>®</sup> options

**Standard available colors:**

- White
- Yellow
- Glow-in-the-dark

**Company Specific (on request):**

- company colors
- company name



# Glow-in-the-dark



## 'Glow-in-the-dark' hooks

Escape from your workspot in case of fire, power blackouts or other emergency situations in confined spaces